



4/256-260 Mountjoy Parade Lorne, VIC

 3  2  1

## FRONT ROW AND FAMILY SIZE AT KALIMNA TERRACES

Located prominently on Lorne's prestigious north-facing oceanfront, this ground floor three-bedroom, two bathroom apartment offers an abundance of natural light and an airy atmosphere.

Enjoy an unobstructed and breathtaking ocean and coastal view. Open-plan kitchen, living, and dining area capitalizes on the stunning vista, and the apartment offers internal atrium and convenient front and rear access, along with off-street parking.

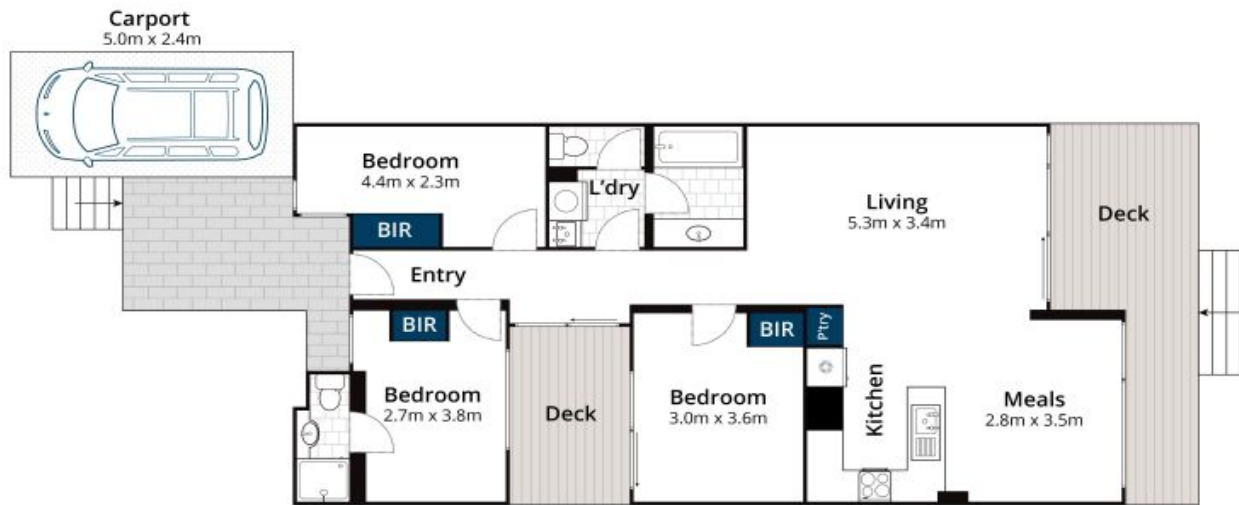
Situated in the tightly held and highly sought-after Kalimna Terrace apartment complex, this residence stands out with its low owner's corporation fees and potential for strong rental income. Arguably one of the finest "lock and leave" opportunities on Lorne's esteemed front row.

**Karen Stribling**

0439 650 838

**Ian Stewart**

0418 522 571



Whilst [bwrm.com.au](http://bwrm.com.au) has made every attempt to ensure the accuracy of the floor plan contained here, measurements are approximate and no responsibility is taken for any error, omission, or mis-statement. This plan is for illustrative purposes only.

**4/260 Mountjoy Parade, Lorne**