



21 Lubel Street Anglesea, VIC

 2
  1
  2

RENOVATOR'S DELIGHT: CENTRAL LOCATION WITH TRANQUI...

Discover the perfect canvas for your renovation dreams in this low-maintenance gem, ideally situated in a central location with a tranquil treed outlook. Boasting instant appeal and endless potential, this property is a rare find for those seeking a project to transform into their dream home.

Conveniently located within walking distance to the main street, primary school, Anglesea River, and scenic walking tracks, this home offers the quintessential coastal lifestyle at your doorstep.

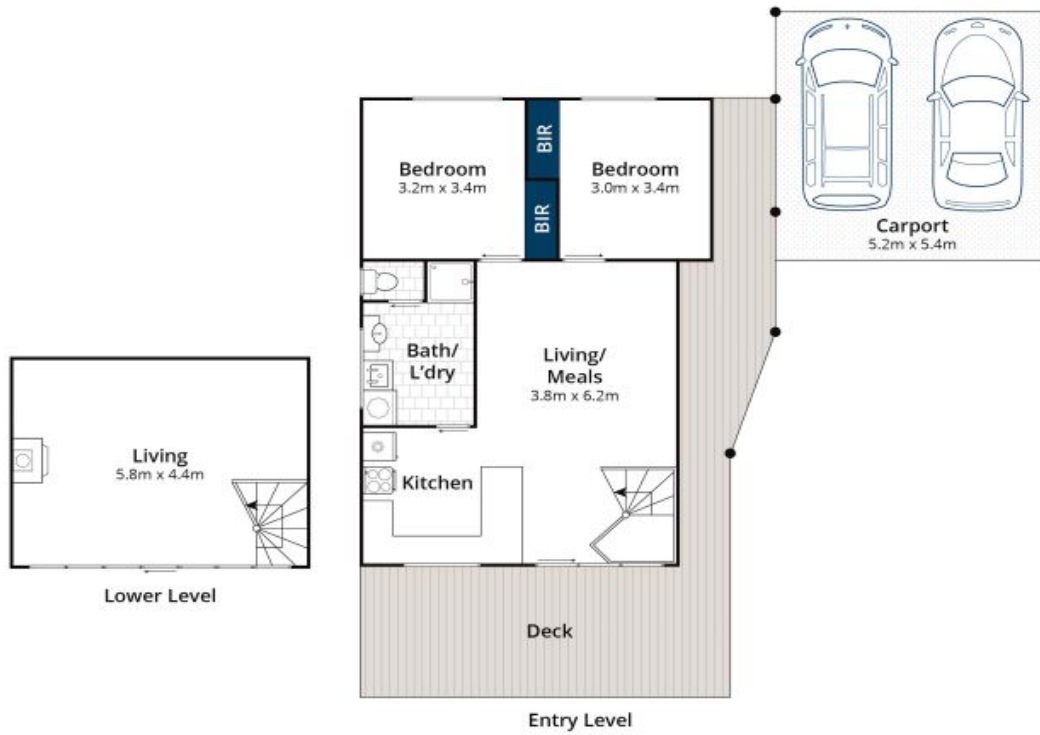
Set on a generous 606sqm (approx.) block, this entry-level property presents a fantastic opportunity to create your ideal coastal residence. Live in it now and update at your leisure, with the flexibility to tailor the home to your personal tastes and requirements.

Inspect:

Price: \$1,150,000 - \$1,200,000

Paula Fowler
0407 031 178

Karen Stribling
0439 650 838



Whilst www.bwrm.com.au has made every attempt to ensure the accuracy of the floor plan contained here, measurements are approximate and no responsibility is taken for any error, omission, or mis-statement. This plan is for illustrative purposes only.

21 Lubel Street, Anglesea