



14 Otway Street Lorne, VIC



3



1



4

## CONVENIENT LIFESTYLE LIVING

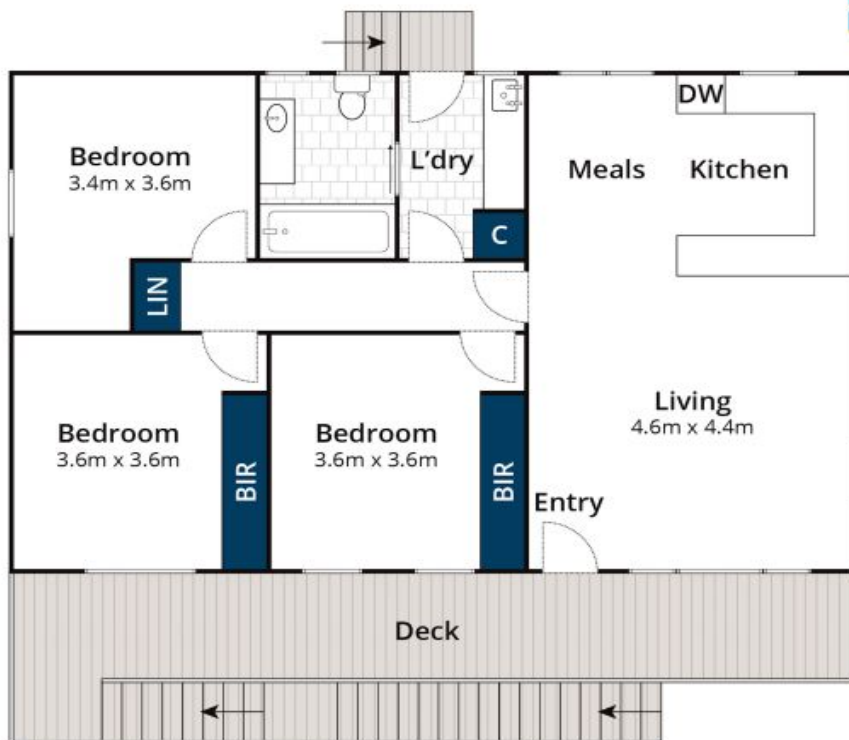
Embrace the convenience of this cherished family home, situated on a 634 sqm allotment offering shelter from the elements. With effortless access to Mountjoy Parade, you can stroll to the "Erskine River Precinct" in seconds, eliminating the need for a car. Meticulously maintained, the original home features three bedrooms, one bathroom, and an open-plan kitchen/dining/lounge area, providing a comfortable beach house experience for short to mid-term stays while you contemplate future development of this prime site. With exceptional proximity to all that Lorne has to offer, your only choice is to relax and relish the lifestyle.

**Tyrone Provan**

0405 124 799

**Michael Coutts**

0438 356 624



Whilst [bwrn.com.au](http://bwrn.com.au) has made every attempt to ensure the accuracy of the floor plans contained here, measurements are approximate and no responsibility is taken for any error, omission, or mis-statement. This plan is for illustrative purposes only.

## 14 Otway Street, Lorne