

11 Lighthouse Road Aireys Inlet, VIC



3



2



3

BEAUTIFUL SUN FILLED HOME FROM SUNRISE TO SUNSET

This serene home is just one house away from Steppy Beach carpark and a minute's walk from the Split Point Lighthouse. Surrounded by a beautiful native garden, the two storey house enjoys a north facing orientation, ensuring sunlight all day long. You'll love watching the sunrise over Steppy Beach car park and the sunset over the valley a rare treat in Aireys Inlet.

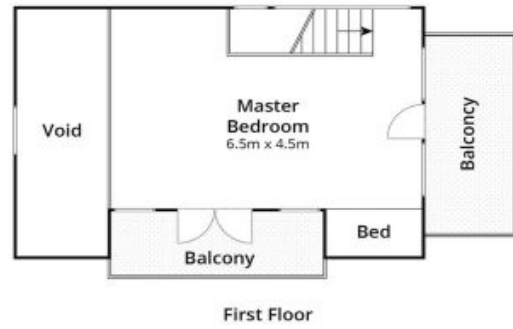
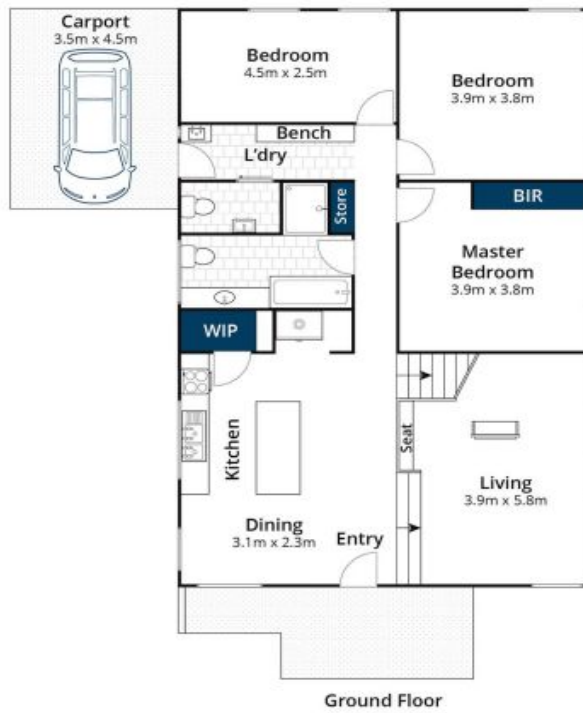
The living area features an open kitchen and dining space, along with a sunken lounge and a cozy fireplace. Down the hall, you'll find three large bedrooms, a bathroom, and a laundry with a second toilet and shower. As you ascend the stairs to the lofted second living area, you're greeted by fabulous sunlight and stunning views over the valley and toward Lorne, with glimpses of blue water sparkling on the horizon.

James Worssam

0418 585 815

Liz Currie

0437 213 229



Approx House Area 154m²

Whilst bwr.com.au has made every attempt to ensure the accuracy of the floor plan contained here, measurements are approximate and no responsibility is taken for any error, omission, or mis-statement. This plan is for illustrative purposes only.

11 Lighthouse Road, Aireys Inlet