

11 Robyn Road Moggs Creek, VIC



4



2



2

METRES FROM THE BEACH AND NATIONAL PARK

Tucked in behind the dunes on a generous, sheltered block of around 1151m² amongst an amazing array of native grass trees, this low maintenance double storey home is perfectly positioned for a spectacular coastal retreat or perhaps for that much desired sea change.

Only a few doors from the end of the street where the National Park begins and with the gorgeous Moggs Creek beach a stone's throw away over the dunes.

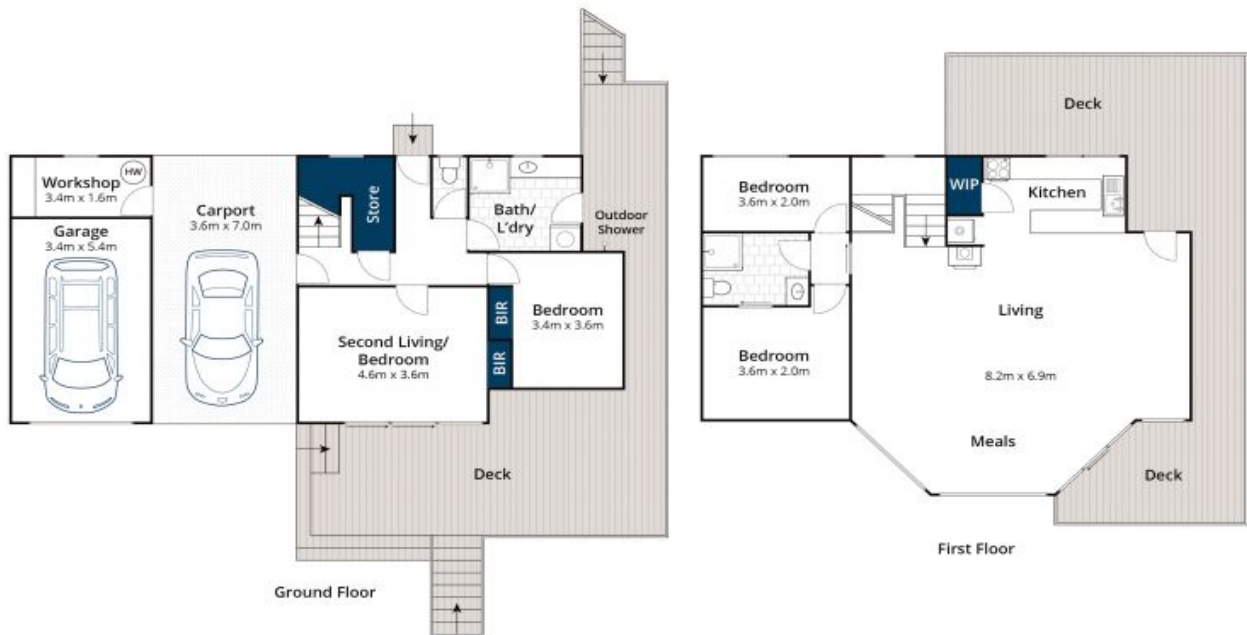
With nothing needing to be spent, the home has a flexible floorplan with upstairs comprising master bedroom and a two-way ensuite, and a fourth bedroom or study at the rear. The living/kitchen/dining area is open plan with a delightful, sheltered tree top outlook with the added extra of a view of breaking waves to the east if you couldn't be bothered grabbing a coffee and walking over the dunes to check the surf. The kitchen gets loads of sun and comes with a small pantry, a Miele dishwasher and warm timber benchtops.

James Worssam

0418 585 815

Liz Currie

0437 213 229



Approx House Area 139m²

Whilst brm.com.au has made every attempt to ensure the accuracy of the floor plan contained here, measurements are approximate and no responsibility is taken for any error, omission, or mis-statement. This plan is for illustrative purposes only.

11 Robyn Road, Moggs Creek