



2/17 Lubel Street Anglesea, VIC

 2  1  2

STYLISH TOWNHOUSE WITH SPACE, LIGHT, AND LOCATION

Boasting serene, treed vistas and a sunlit north-facing courtyard, this impressively spacious 2-bedroom townhouse is the ideal choice for downsizers or as a lock-and-leave weekender.

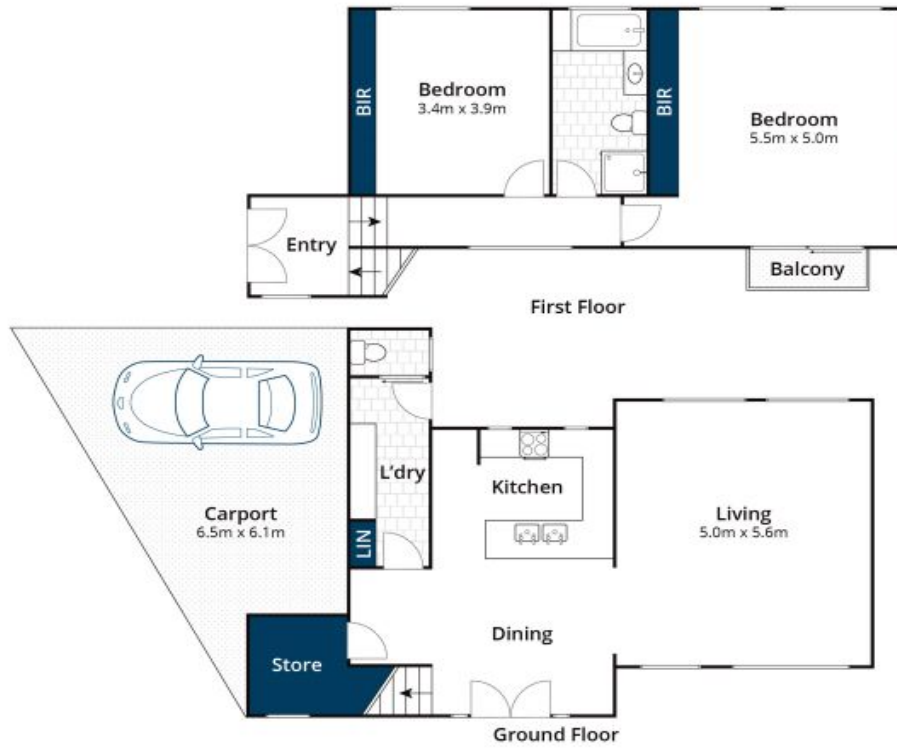
Step inside to discover high ceilings that create a sense of openness, leading both downstairs and upstairs. The light-filled design flows seamlessly to the open-plan kitchen and dining area, which connects to a private north facing courtyard-a perfect setting for outdoor entertaining.

The expansive lounge room at the rear of the home provides a relaxing retreat, while upstairs, two generous bedrooms are accompanied by a central bathroom. The oversized master bedroom offers a peaceful retreat space with its own deck area, adding a touch of luxury to everyday living.

Price: \$880,000

Paula Fowler
0407 031 178

Jess Nowson
0493 896 000



Whilst bwrn.com.au has made every attempt to ensure the accuracy of the floor plan contained here, measurements are approximate and no responsibility is taken for any error, omission, or mis-statement. This plan is for illustrative purposes only.

2/17 Lubel Street, Anglesea