



2/25 Fernald Avenue Anglesea, VIC



4



3



2

LARGER THAN LIFE!

This sun-filled, two-storey townhouse embodies stylish coastal living, offering a surprising sense of space, flexibility, and modern functionality. Awash with natural light, this home combines generous proportions with an enviable outdoor lifestyle, perfectly suited for families, entertaining, or quiet retreat.

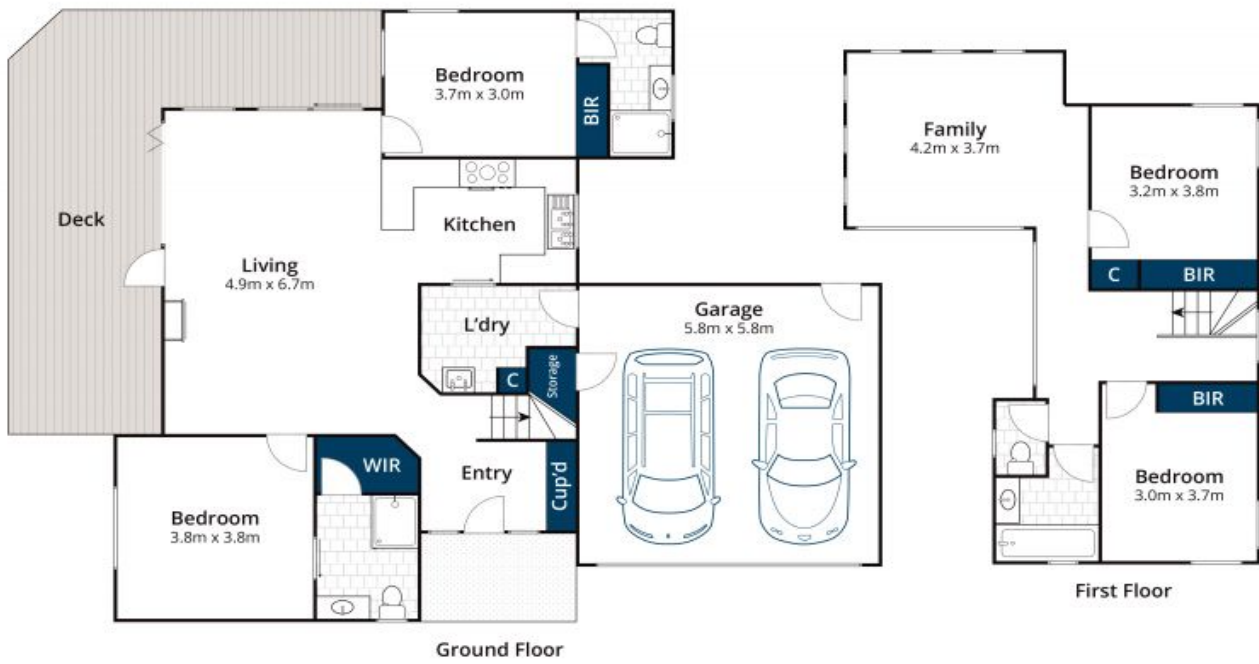
Boasting four spacious bedrooms, three bathrooms, and a double garage with internal access, the design is both practical and inviting. Downstairs, the open-plan living area is the heart of the home, featuring a cozy fireplace for those cooler evenings and a well-appointed kitchen. Complete with stone benchtops, quality appliances, ample storage, and polished timber floors, the kitchen blends functionality with timeless coastal charm. This central space flows seamlessly onto expansive north-facing decking which includes a built-in BBQ area-perfect for entertaining or relaxing while soaking up the sun.

Paula Fowler

0407 031 178

Karen Stribling

0439 650 838



Whilst bwrn.com.au has made every attempt to ensure the accuracy of the floor plan contained here, measurements are approximate and no responsibility is taken for any error, omission, or mis-statement. This plan is for illustrative purposes only.

2/25 Fernald Avenue, Anglesea