



48 Bambra Road Aireys Inlet, VIC



4



2



5

## 5100M2 (APPROX.) WITH SUB-DIVISION POTENTIAL (STSA...

Last offered for sale six decades ago, this is one of the last holdings on Bambra Road that is suitable for subdivision. Set on around 5100 sqm, regulations allow for subdivision down to 550sqm allotments.

This impressive better brick and weatherboard home offers vast accommodation with a versatile split level design. Featuring four generous bedrooms and two bathrooms, the home also includes a large workshop/man cave tucked neatly beneath the house.

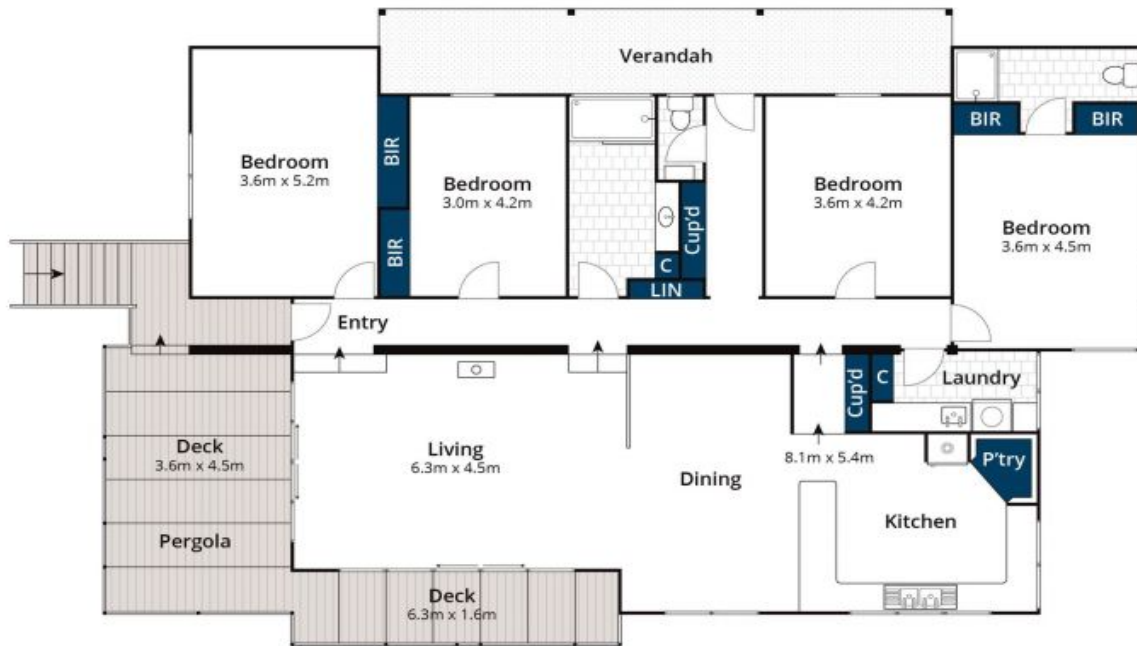
The open plan living, kitchen, and dining area sits on one level, featuring pitched ceilings, a spacious deck, and beautiful valley views with a sunny outlook, and if you stand in just the right spot, even a glimpse of the ocean.

A striking sandstone feature wall separates the higher split level, where the four bedrooms and two bathrooms are located. Each bedroom is generously sized and features a gabled roofline, complete with unique diamond shaped gable windows that add character and charm.

**Price:** \$3,900,000

**James Worssam**  
0418 585 815

**Liz Currie**  
0437 213 229



Whilst [bwrn.com.au](http://bwrn.com.au) has made every attempt to ensure the accuracy of the floor plan contained here, measurements are approximate and no responsibility is taken for any error, omission, or mis-statement. This plan is for illustrative purposes only.

## 48 Bamba Road, Aireys Inlet