



2314 Great Ocean Road Lorne, VIC



MOUNT ST GEORGE - THE EPITOME OF A PRIVATE COASTAL...

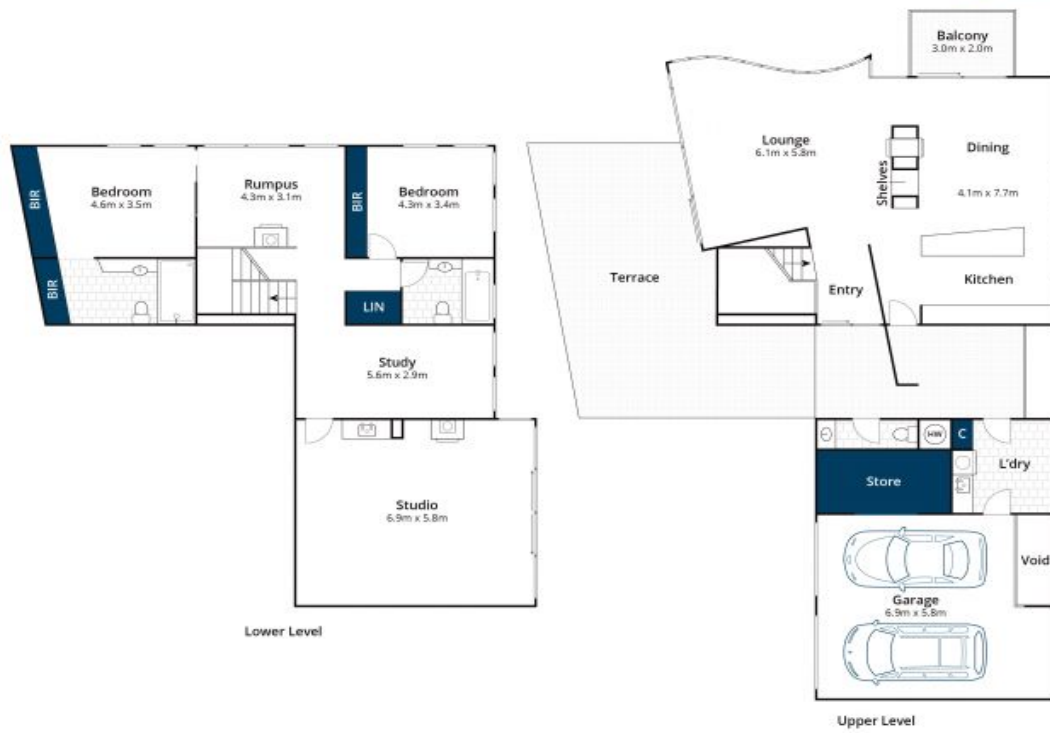
A significant and awe inspiring land holding of 234 acres set high above Lorne, this is the last residential property of the Lorne township which adjoins state forest. The land is zoned rural conservation and has a boundary with St George River frontage and is a true offering of privacy and seclusion surrounded by nature.

A fine example of a rural / coastal retreat, the completely off grid home blends effortlessly into the landscape and was designed by renowned Surfcoast architect Andy Sprogis. With a Northern orientation the home opens into a stunning, light filled g open plan kitchen/dining/lounge area. Downstairs is a second living area, bathroom and two bedrooms, one with ensuite. A study and a large artist studio allow scope for conversion to further bedrooms.

Price: \$4,600,000

Tyrone Provan
0405 124 799

Ian Stewart
0418 522 571



Whilst bwrn.com.au has made every attempt to ensure the accuracy of the floor plan contained here, measurements are approximate and no responsibility is taken for any error, omission, or mis-statement. This plan is for illustrative purposes only.

2314 Great Ocean Road, Lorne