



11 Aireys Street Aireys Inlet, VIC



3



2



2

## AN ARCHITECTURAL GEM

Designed by distinguished Melbourne architect Peter McIntyre, this one-of-a-kind property is set on an enormous iron bark gully just moments from Aireys Inlet's Sandy Gully surf beach.

The property comprises a main house, separate self-contained cottage and a studio all overlooking a private, heavily-treed gully and stone-lined stream.

The two dwellings are quintessentially McIntyre, featuring 45-degree pitched roofs, abundant use of exposed premium cedar, oregon, hard woods and stone.

Large windows and cosy window seats capture the ever-changing tree vistas while a grand open fireplace anchors the living space with warmth and character. A truly unique coastal retreat ? private, peaceful and architecturally timeless.

**Price:**

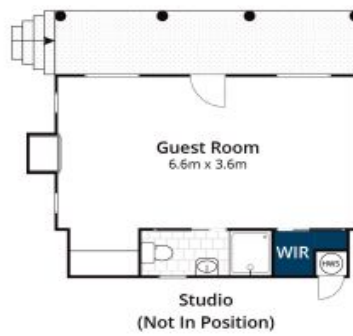
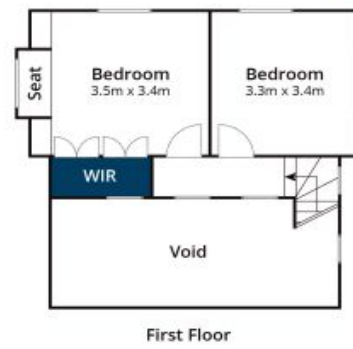
\$1,910,000 - \$2,100,000

**James Worssam**

0418 585 815

**Liz Currie**

0437 213 229



Whilst [bwrn.com.au](http://bwrn.com.au) has made every attempt to ensure the accuracy of the floor plan contained here, measurements are approximate and no responsibility is taken for any error, omission, or mis-statement. This plan is for illustrative purposes only.

## 11 Aireys Street, Aireys Inlet