



3 Waverley Avenue Lorne, VIC



4



2



6

SPACE, VIEWS AND A STROLL TO TOWN

Perched above Louttit Bay with a sweeping outlook across the ocean and town, this solid double-storey home delivers the relaxed coastal lifestyle Lorne is known for. Leave the car at home and stroll to the main street, beach, caf?s and shops in just minutes.

Inside, floor-to-ceiling glass and warm timber finishes create a welcoming coastal feel. The spacious open-plan living and dining zone connects to a practical timber kitchen and opens out to a sunny deck, where the blue water views and leafy surrounds set the scene for long afternoons and easy entertaining.

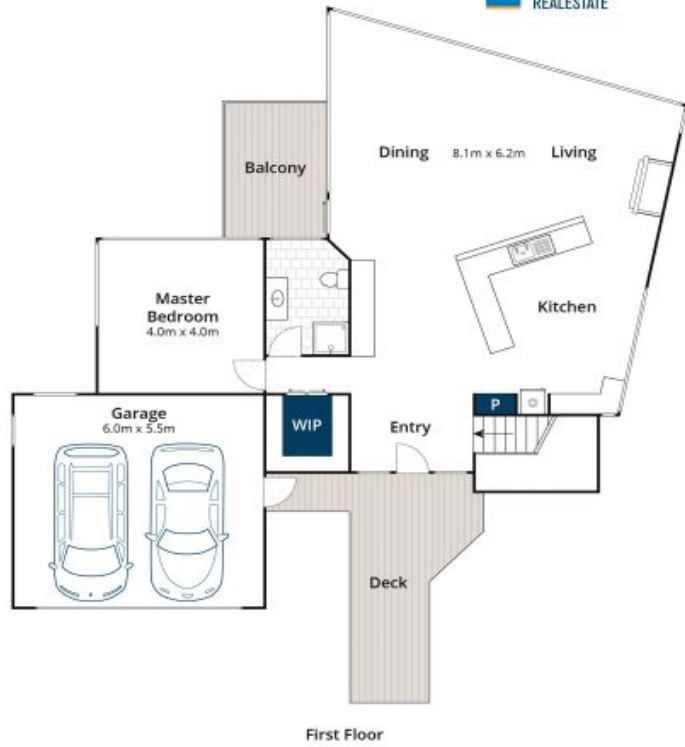
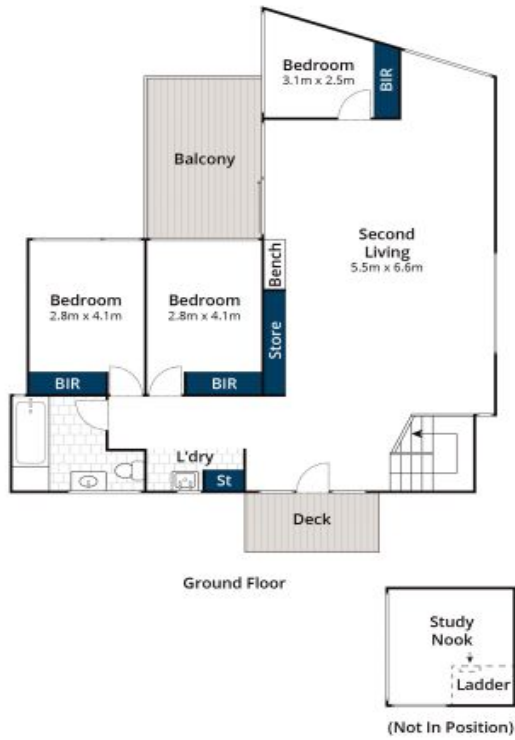
The master suite sits on the entry level, complete with walk-in robe, ensuite and ocean views you'll wake up to every morning.

Downstairs, three additional bedrooms and a second living area provide plenty of space for family and guests, flowing out to another deck surrounded by greenery.

Price: \$1,800,000

Karen Stribling
0439 650 838

Tyrone Provan
0405 124 799



Whilst bwrn.com.au has made every attempt to ensure the accuracy of the floor plans contained here, measurements are approximate and no responsibility is taken for any error, omission, or mis-statement. This plan is for illustrative purposes only.

3 Waverley Avenue, Lorne